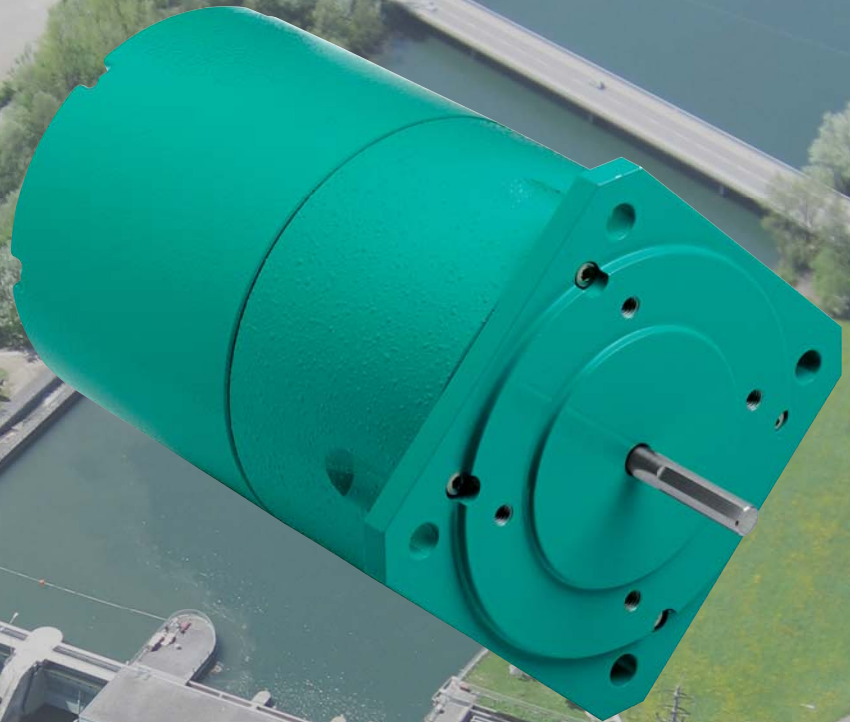


rittmeyer
KNOW-HOW
FROM EXPERIENCE



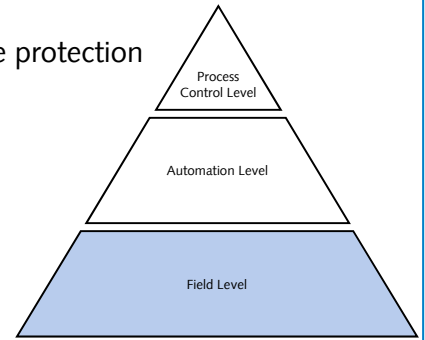
RIPOS

Absolute Encoder MGI

**ACQUISITION of ANGLE OF ROTATION, LIFT, TRAVEL -
COMPACT - RUGGED - EASY ASSEMBLY -
INTERPOLATION-CURVE - ANALOGUE OUTPUT -
DIGITAL OUTPUT (LIMIT VALUE, GRAY, BCD) -
HART - PROFIBUS-DP**

Arguments

- Extremely robust regarding protection class, temperature range and overvoltage protection
- Starting drive torque ≤ 1 Ncm [1.42 oz in.]
- Very high accuracy up to $\pm 0.044^\circ$
- Analogue output 4 ... 20 mA, HART compatible
- Code Output 21 Bit (BCD, Gray or Binary), type MGZR
- 4 limit switches
- Fieldbus connectivity: Profibus-DP

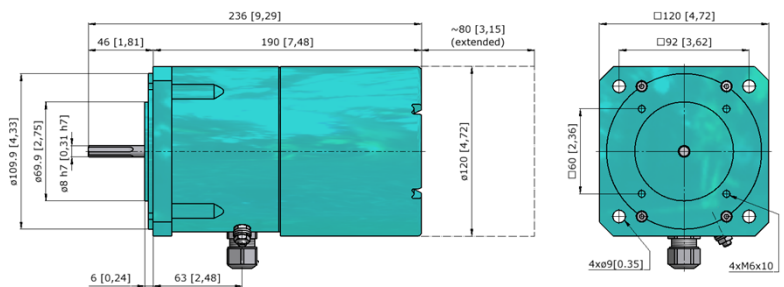


Design Versions / Dimensions [mm/in.]

Measuring range	principle
0 ... 360°	optical, 13 bit
0 ... 4096 revolutions	optical, 12 + 12 bit

Output versions

- Analogue Output, HART compatible
- Digital und Analogue Output, HART compatible, incl. MGZR
- Profibus-DP Output



Technical Data

Supply

- 24 VDC $\pm 20\%$, 48 VDC $\pm 20\%$
- Max. 7.5 W

Overvoltage Protection

- Built in coarse protection

Analogue Output

- 4 ... 20 mA, HART compatible

Digital Outputs

- OK-Relay
- 21 Bit (4 limit values, GRAY, BCD, Binary)
- AC/DC 60V, 0.5 A

Fieldbus Connectivity

- Profibus-DP (own unit version)

Processing

- Scaling / Interpolation-curve
- Limit values / Hysteresis

Parameterisation

- On site via Control Board type MGZB
- Remote via HART PC-Parameterisation SW type MGZP

Operating temperature

- -25...+60°C (without heating)
- -40...+60°C (with heating MGZH)

Protection Class

- IP67
- Optional IP68 / submersible 35 m [115 ft]

Weight

- Approx. 2.9 kg [6.4 lbs]



This product concurs with the authoritative terms of the EU.